



BUGAAN  
KRUNGTHEP KREETHA

*MY HOME SPEAKS FOR MYSELF*

≡ SANSIRI

*THIS IS*  
**BU GAAN**  
KRUNGTHEP KREETHA

*THE LATEST CREATION  
FROM SANSIRI*

BuGaan is rich in every detail, designed for the utmost convenience amidst the finest blend of modern living and classic opulence, from the tranquil comfort of the serene Master Suite to the cozy mingle at the private home.

**6** KM.  
FROM  
SIRAT EXPRESS WAY

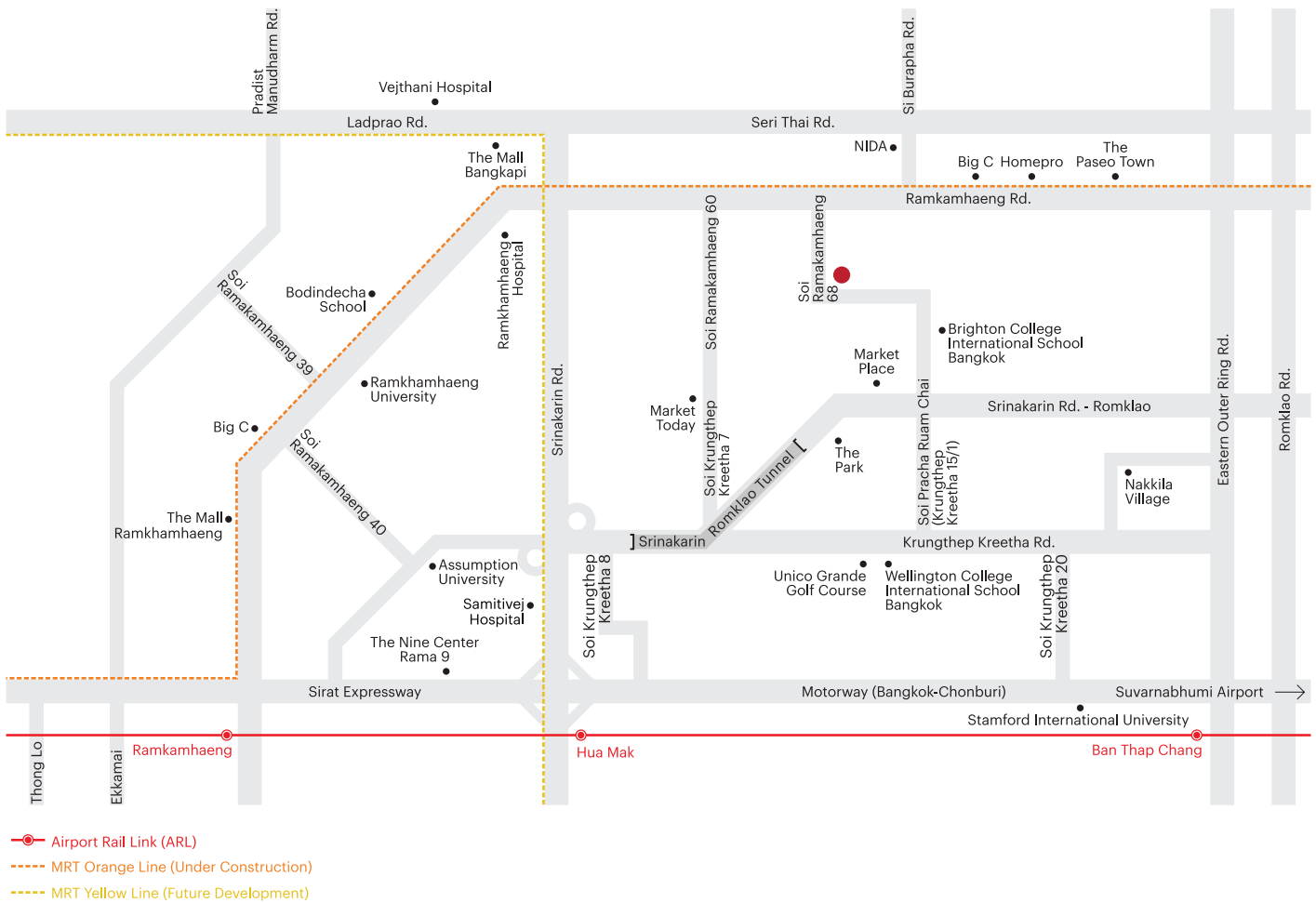
**10** KM.  
FROM  
THONG LO & EKKAMAI

*AN INCOMPARABLE LOCATION  
FOR MODERN LUXURY LIVING*

BuGaan is surrounded by a full cluster of classy restaurants, cocktail lounges, department stores, community malls, golf courses, leading hospitals, and prestigious international schools. Bangkok's CBDs as well as the hippest district of Thong Lo are easily accessible within a few minutes via the Expressway.

This location is considered one of the most desirable neighbourhoods for spacious, luxury living.

# LOCATION



## MASS TRANSIT

- Metropolitan Rapid Transit Orange Line, Ban Ma Intersection 2.5 KM.
- Kanchanaphisek Road (Eastern outer ring) 3 KM.
- Mass Rapid Transit Yellow Line, Srikreeta Station 4 KM.
- Suvarnabhumi Airport 21.4 KM.

## INTERNATIONAL SCHOOL

- Brighton College International 2.2 KM.
- NIDA Thailand 2.3 KM.
- Assumption University 4.9 KM.
- Wellington College International 5.9 KM.
- Bangkok Patana International 18.3 KM.

## LIFESTYLE

- Unico Grande Golf Course 4.7 KM.
- Thonglor, Ekkamai 10.3 KM.
- Crystal Design Center (CDC) 12.2 KM.
- Octave Rooftop Lounge & Bar 13.5 KM.
- Emporium, Emquartier 14.4 KM.
- Red Sky Restaurant 16.5 KM.
- Central Embassy 17.3 KM.
- Siam Paragon 17.9 KM.
- Sirocco sky bar 23.2 KM.
- Happy & Healthy Bike Lane 23.7 KM.

## HOSPITAL

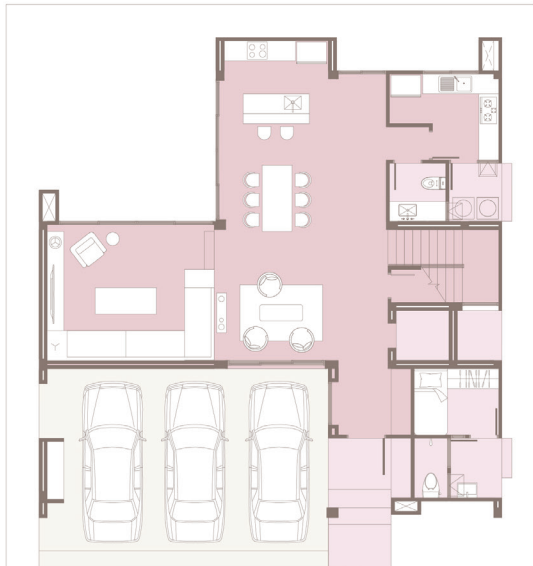
- Bangkok Hospital 11.3 KM.
- Samitivej Sukhumvit Hospital 15.3 KM.
- Bumrungrad International Hospital 16.2 KM.



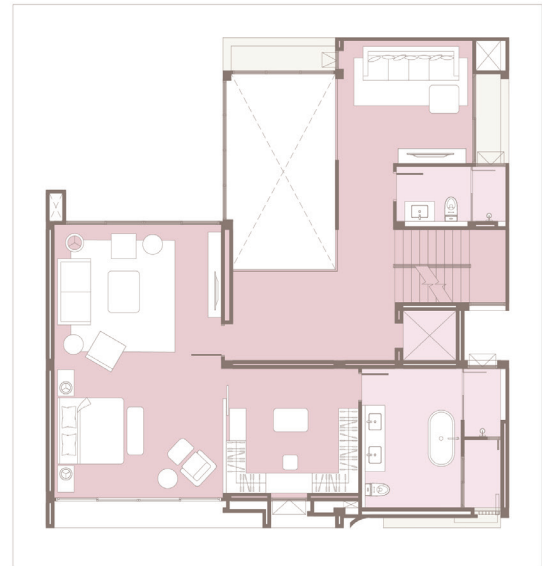


## *PROJECT INFO*

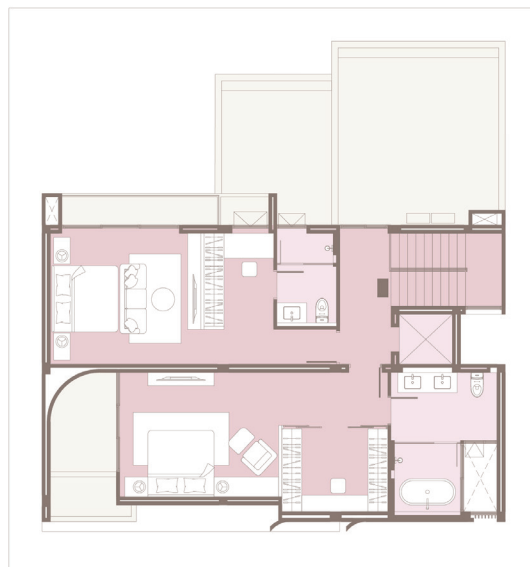
<b>Project Area</b>	: 19 Rais
<b>Number Of Units</b>	: 48 Units
<b>Product Type</b>	: 3 Storey Private Luxury Residence
<b>Facilities</b>	: Backyard Garden and Clubhouse
<b>House Area</b>	: 430 - 655 Sq.M.



1<sup>st</sup> Floor Plan



2<sup>nd</sup> Floor Plan



3<sup>rd</sup> Floor Plan

Stimulated image and atmosphere which may change without prior notice.

**Usable Areas :** 430 Sq.m

**Land Areas :** 68 - 110 Sq.wa

1 PENTHOUSE ON GROUND

2 MASTER SUITE BEDROOMS

5 BATHROOMS

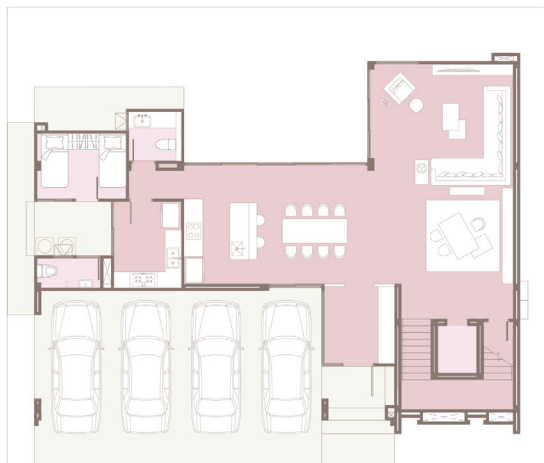
3 PARKING SPACES

1 MAID ROOM

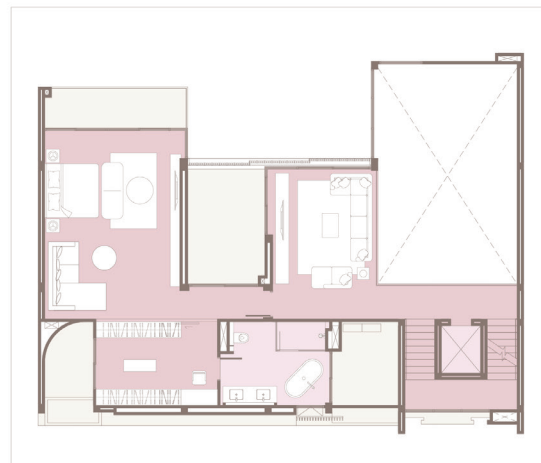




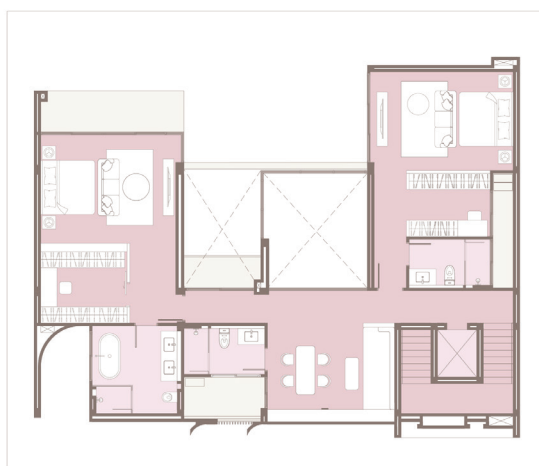
Stimulated image and atmosphere which may change without prior notice.



1<sup>st</sup> Floor Plan



2<sup>nd</sup> Floor Plan



3<sup>rd</sup> Floor Plan

Stimulated image and atmosphere which may change without prior notice.

**Usable Areas :** 540 Sq.m

**Land Areas :** 85 - 168 Sq.wa

1 PENTHOUSE ON GROUND

2 MASTER SUITE BEDROOMS

5 BATHROOMS

4 PARKING SPACES

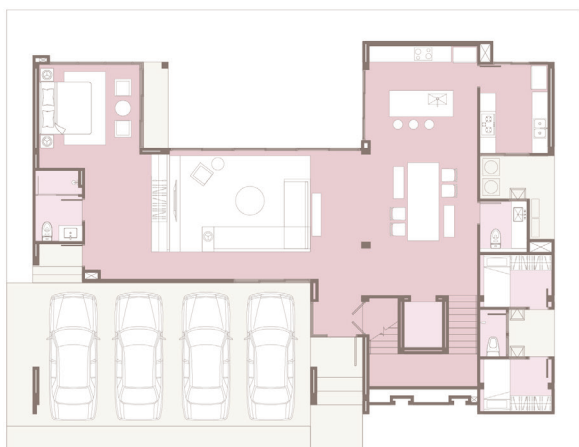
1 MAID ROOM



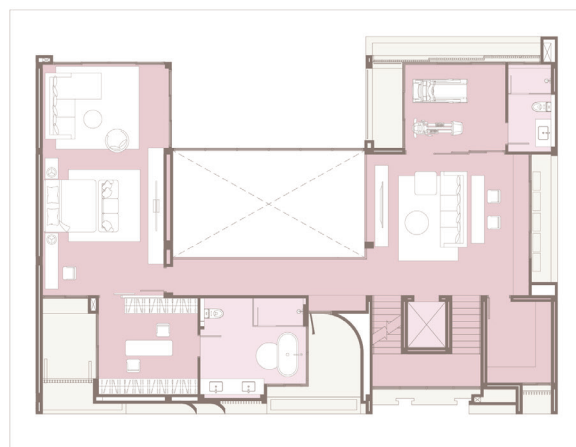


Stimulated image and atmosphere which may change without prior notice.

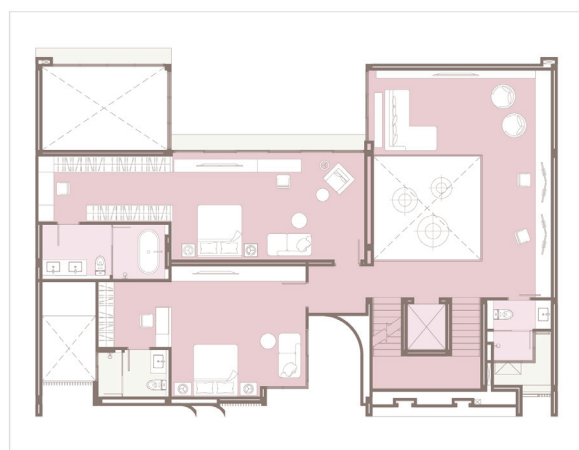




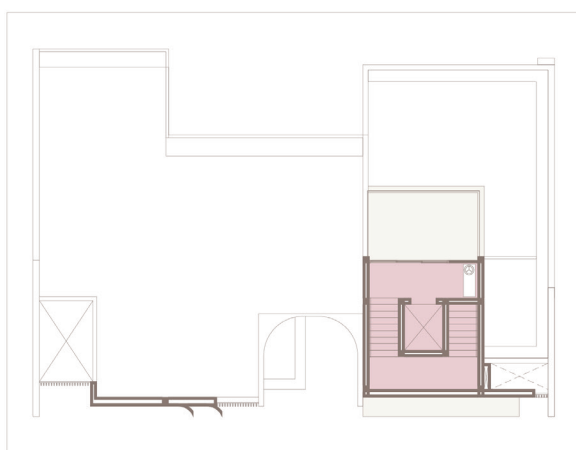
1<sup>st</sup> Floor Plan



2<sup>nd</sup> Floor Plan



3<sup>rd</sup> Floor Plan



4<sup>th</sup> Floor Plan

Stimulated image and atmosphere which may change without prior notice.

**Usable Areas :** 655 Sq.m

**Land Areas :** 97 – 144 Sq.wa

- 1 PENTHOUSE ON GROUND
- 3 MASTER SUITE BEDROOMS
- 7 BATHROOMS
- 4 PARKING SPACES
- 2 MAID ROOMS



Stimulated image and atmosphere which may change without prior notice.